



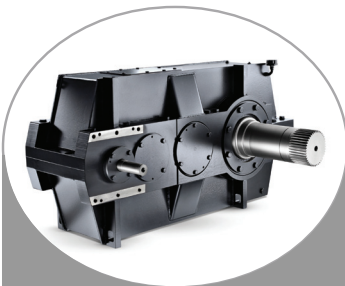
**R&M**  
MATERIALS HANDLING

## HEAVY-DUTY LIFTING REQUIRES HEAVY-DUTY SOLUTIONS

R&M's DXW is an open winch electric overhead hoist, designed for demanding, heavy-duty applications, across a wide range of industries. Combined with our competitive crane offering, the DXW helps improve productivity, while maintaining ease of use.



EXCEPTIONAL QUALITY & OUTSTANDING PERFORMANCE ARE OUR STANDARD



### AGMA 11 GEARBOX

- Smooth & quiet operation
- Less wear = less maintenance
- Designed & built in-house for cranes only

**PRECISION**



### HARDENED WHEELS

- Optimal wear durability
- Extends life for wheels & runway
- Heavy-duty MCB-type bearings for durability & ease of maintenance

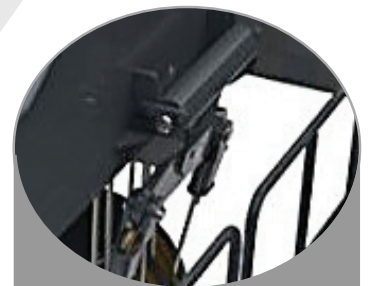
**DURABILITY**



### PERPENDICULAR HOOKS & SHEAVES

- Reduce rope wear
- Optimal hoisting performance
- True vertical lift
- Sheaves in line with drum grooves

**PERFORMANCE**



### OVERLOAD LIMITER

- Prevents accidental overload
- Extends product life
- Predictive maintenance monitoring
- Increased safety

**SAFETY**

## THE HEART OF THE CRANE

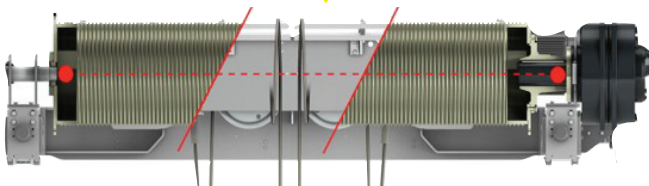
The DXW is tailored to meet your specific requirements. The modular design of the hoists and trolleys allow a wide variety of application-specific designs. Choose from an abundance of special features, such as: outdoor protection and special temperature ranges, specialty hooks and provisions for below the hook devices, precision load and sway controls, maintenance platform, centralized lubrication for ease of maintenance and extra durable hardened hoist drum and sheaves.



## STANDARD DXW HOIST FEATURES

- 6.3 – 160 ton capacity
- Wide range of available lifts and lifting speeds
- Main power supply for 460V-3PH-60Hz, 575V-3PH-60Hz or 380-3PH-50Hz
- CMAA Class D trolley for heavy duty operation
- Ambient temperatures 41°F - 113°F [5°C - 45°C]
- Extended run time with name plated 60 min. motors & class H insulation
- Inverter duty motors for all motions providing smooth operation and reduced load sway
- DC disc hoist motor brake with 200% braking torque

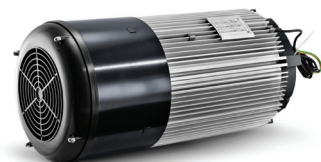
## TWO-POINT DRUM SUSPENSION VALUE



Allows gearbox and hoist motor to articulate when the rope drum is bent under load: no misalignment in the connection between the rope drum drive end and gearbox.

No fatigue failure point at the drive end of the rope drum. Lifetime of the gearbox bearings is extended.

## CORE OF LIFTING ADVANTAGE



Our hoists are built around key components (motors, gearboxes, control systems and software) that are designed and manufactured in house and are made specifically for the crane industry. This approach gives us the flexibility to supply the right-sized components with high-quality and smooth operation for your lifting needs.